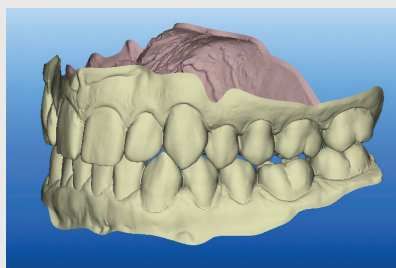


Going Digital with Specialty

Specialty Appliances is leading the charge in digital technology having already processed thousands of digital cases. Without question, the primary benefit to practices and patients is the amazing accuracy with this technology – our remakes when using digital files has dropped to almost zero. We can process ANY appliance using digital files including Herbst Appliances, Aligners, Indirect Bonding plus any type of Retainer or Expander.

Digital Advantages

We accept any scan in a STL file format. We then print a working model and fabricate your appliance. This process is seamless from your initial intraoral scan to the seating appointment.



Well over 50% of our Indirect Bonding customers now submit digital files for their cases. The advantages with digital files include faster turnaround time and improved accuracy as impressions and model pour-ups are eliminated.

Practices using Invisible Retainers can have their appliances made within 3 days once digital files are received. Also, we can process several Invisibles on the one plastic model so patients can request extra Retainers for extended wear.

Our traditional Retainers can be made from digital models as well. You can even scan your patient with the brackets on and we'll remove them and fabricate the Retainer for "immediate" delivery at the debonding appointment.



The Digital Process—Step by Step

Once we have the digital file in an stl format, we can fabricate any appliance. Here's how it works:

- Complete a Specialty Digital Rx sheet and be sure to save the completed form to your computer as a record.
- Upload the Rx and scanned digital file in an stl format to our secure dropbox.
- For further information, please request our How To Complete A Digital Rx sheet by calling 800-522-4636 or emailing us at digital@specialtyappliances.com.