

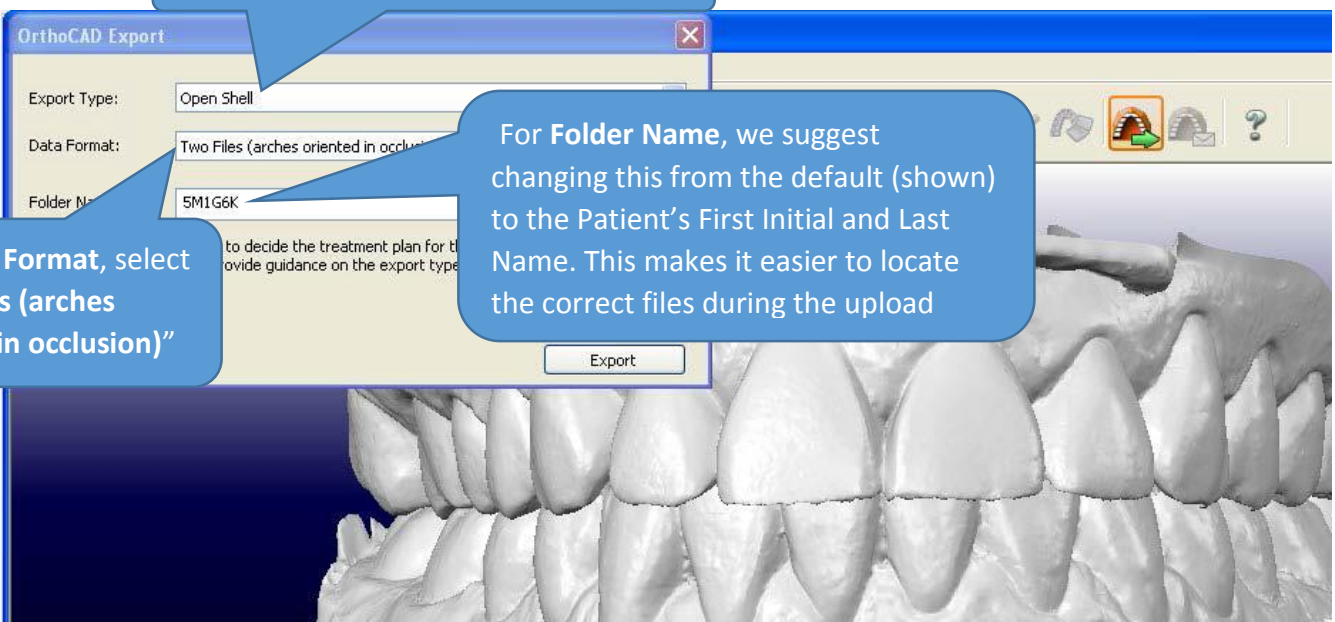
How to Export Scans as .STL Files from an iTero Scanner

1. Open your web browser and Login to your [MyAlignTech](#) account
2. Search for the patient's scans you wish to export. *iRecord scans will be available online within 30 minutes of the scan. iCast scans are typically not available for 2-5 days.*
3. Select **Export (OrthoCAD 3.5 or higher)**. This will download the image into OrthoCAD and open dialogue for completing the STL export.

For the **Export Type**, select **Open Shell**

For **Folder Name**, we suggest changing this from the default (shown) to the Patient's First Initial and Last Name. This makes it easier to locate the correct files during the upload

For **Data Format**, select "Two Files (arches oriented in occlusion)"



4. Click on the **Export** button and then click **Yes**. You should now be able to view the folder and .STL files. *To view the .STL files you have to install the **iTero Viewer**. Click **Support** for installation instructions.*
5. Your scans are now saved as .STL files on your computer in the folder you specified. Be sure to make a note of where the files were saved. These files will need to be located during the upload process. *We recommend creating a Case File folder to store both the Scans and the Rx Sheet to make it easier to locate during the upload process.*