

# Scan Codes:

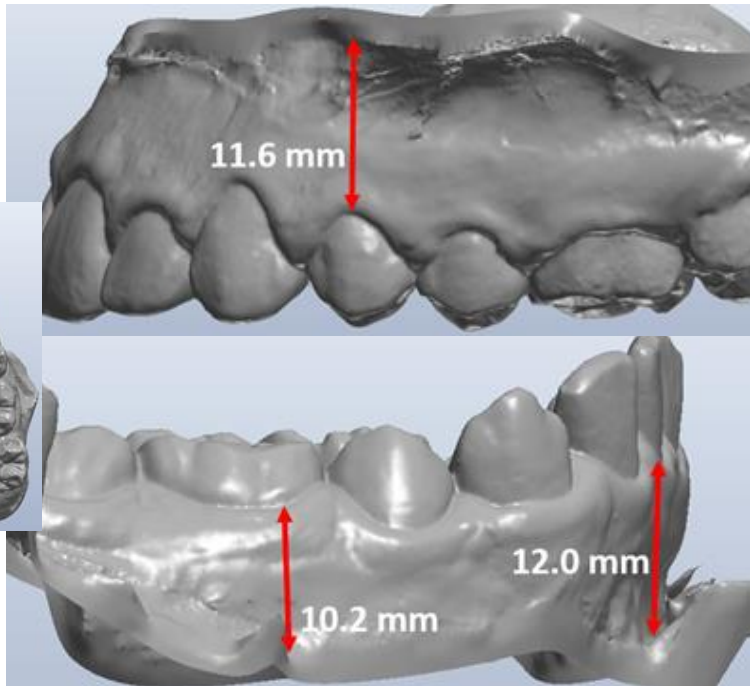
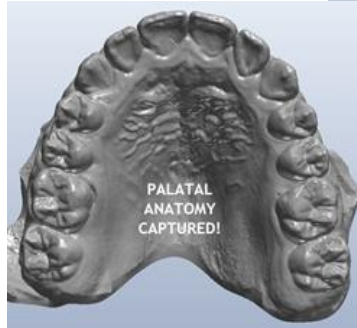
When fabricating orthodontic appliances, it's true that different amounts of anatomy are required depending on the specific appliance being requested. Please use these "scan codes" in your office to ensure that the necessary anatomy is captured based on the desired appliance.

## Scan Code: 1

10-12 mm of gingival tissue **AND** palatal anatomy captured

### Corresponding Appliances:

- Class II Appliances (Herbst®, MARA, X-Bow®)
- Metal Appliances (Expansion, Distalization, Space Maintenance, Habit, etc.)
- Functionals (Schwarz, Saggitals, Twin Blocks, etc.)
- Splints (SRS, ARS, Dual Laminate, etc.)



## Scan Code: 2

3-5 mm of gingival tissue captured

### Corresponding Appliances

- Indirect Bonding
- Invisible Retainers/Guardian Retainers
- Clear Image Aligners
- Opposing Models

